

Last update :09/05/2006

[General documentation](#)

[The livecd-howto](#)

[How to resize partition, step by step](#)

HOW TO "MOVE / COPY" PARTITION

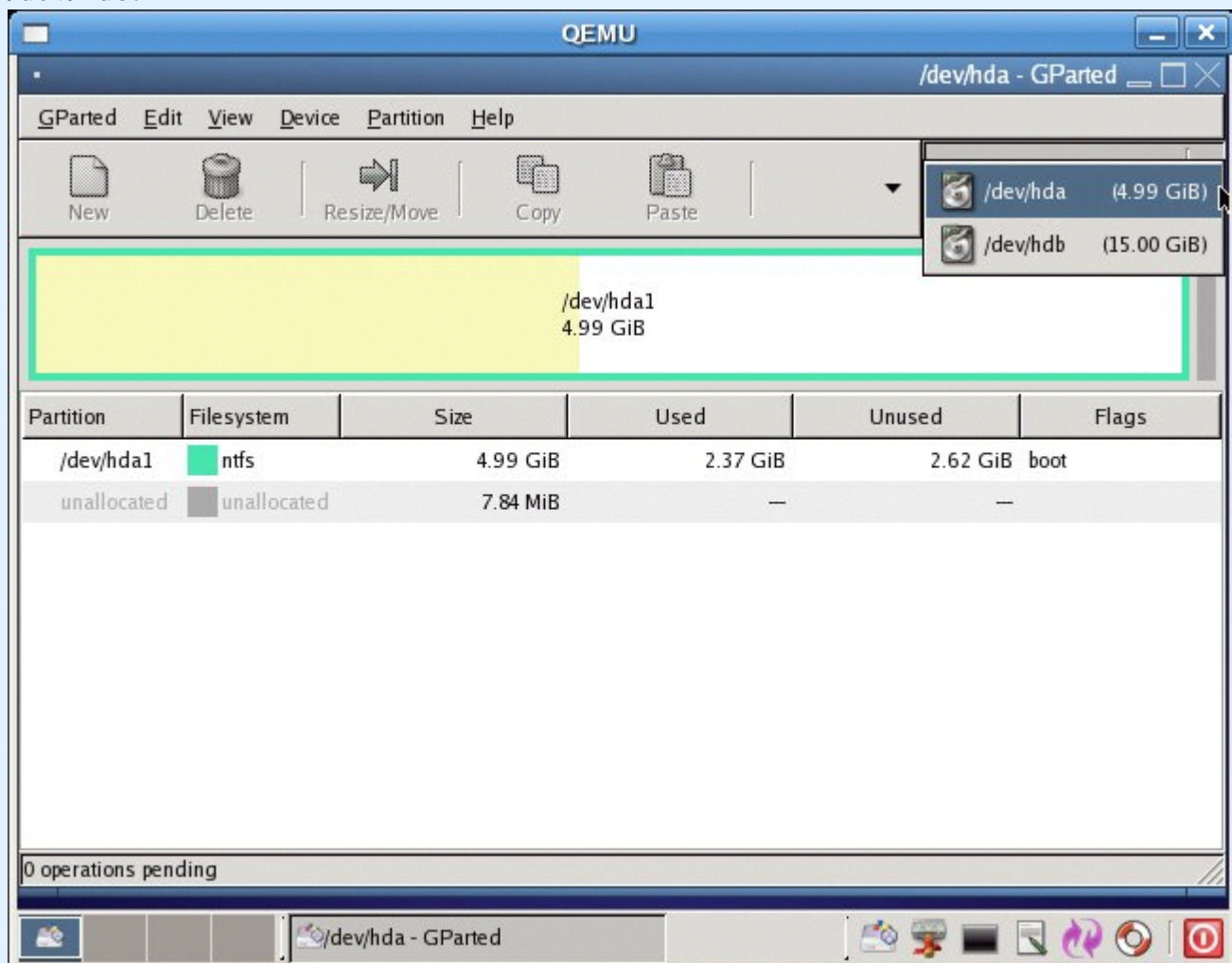
In this documentation we will copy a NTFS partition from a drive to another one ; to move a partition, follow the same instructions, but choose Move : you can only move on the same device ! Moving to another device is copying.

(Screenshots have been made with [QEMU](#))

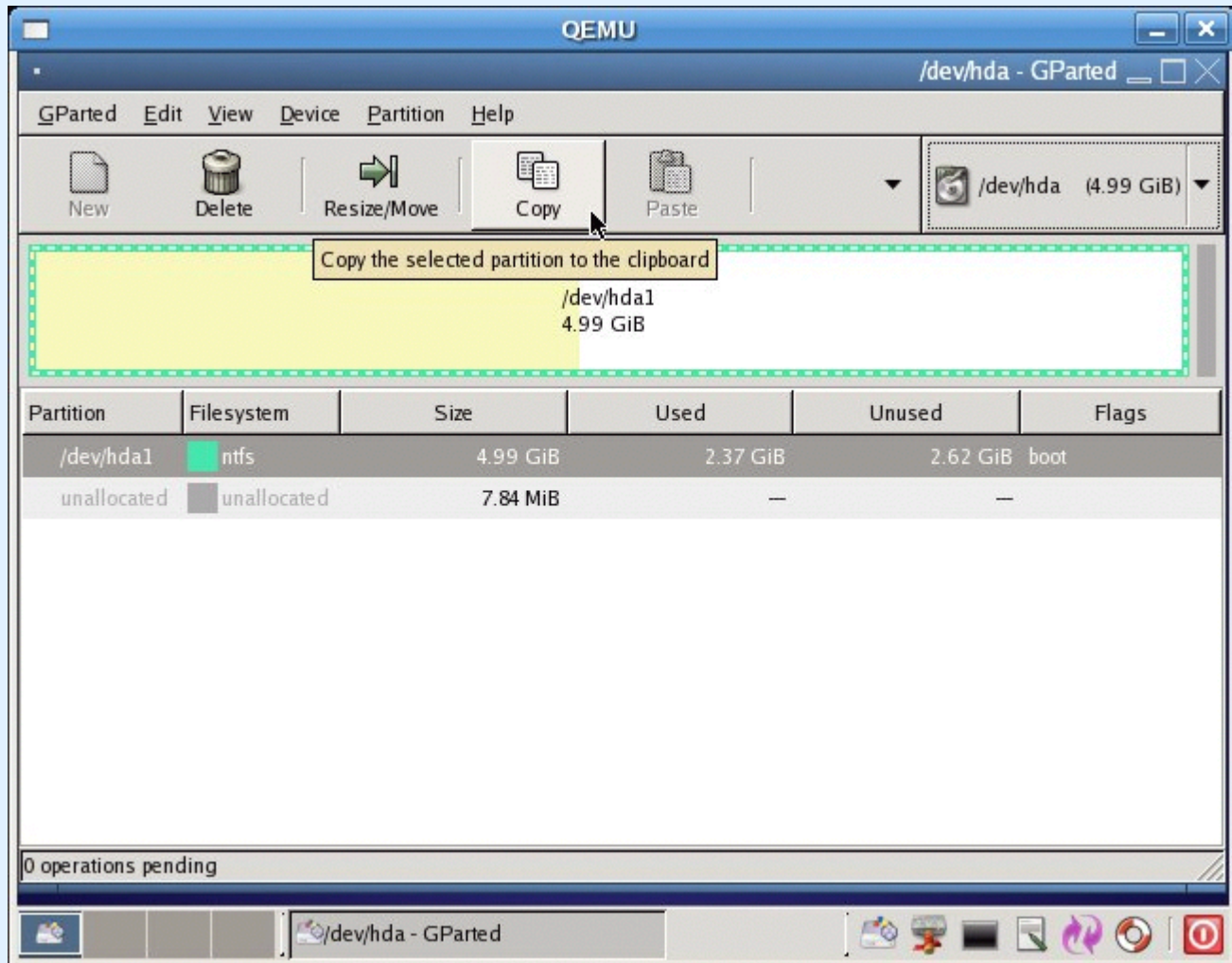
Please, first have a look at "introduction", from the [General documentation](#)

Running GParted from a Linux system is the same as running it from the livecd.

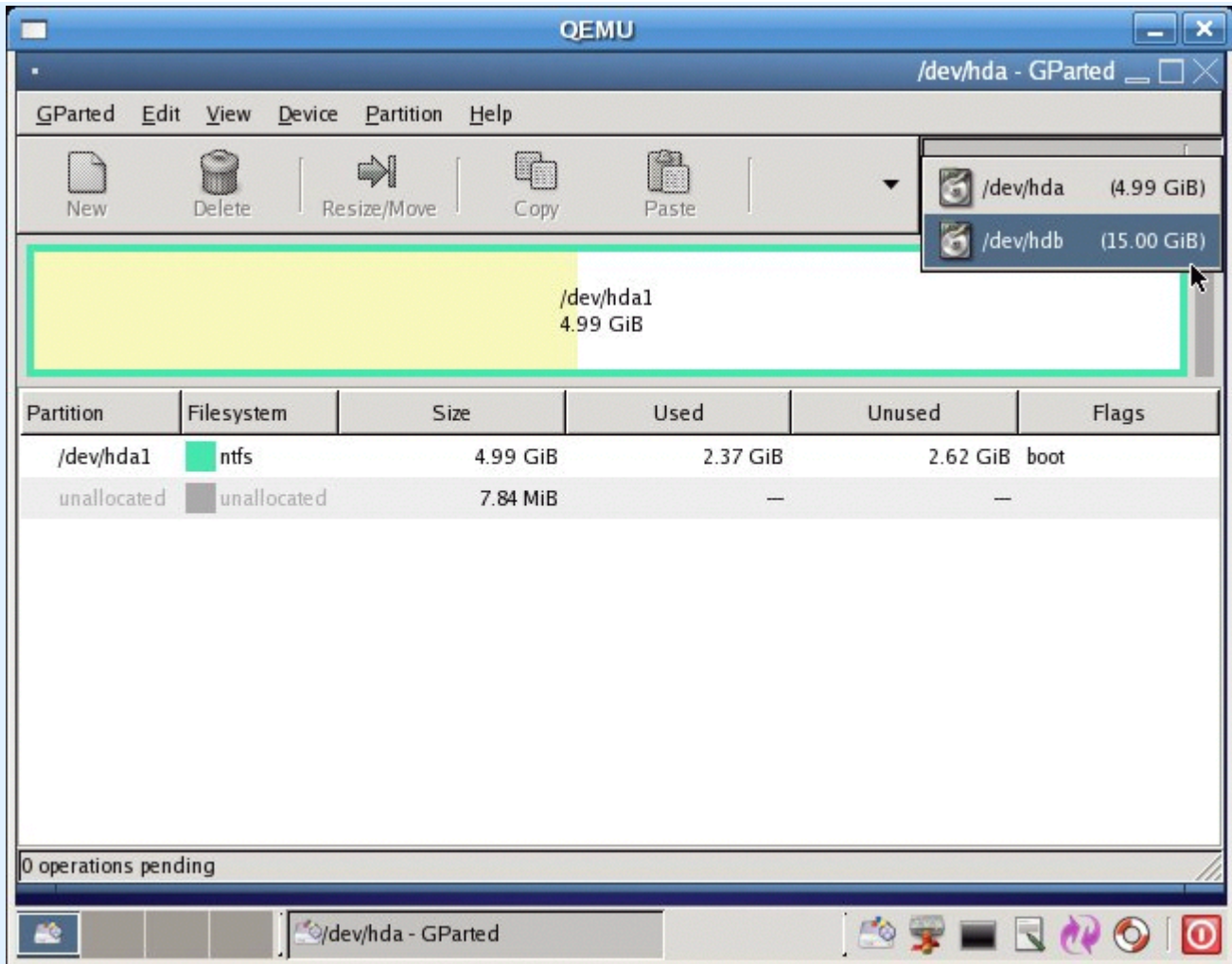
a) Booting off the livecd, GParted shows the harddrive contains a NTFS partition we want to copy (/dev/hda). We want to copy the ntfs partition to the second harddrive : /dev/hdb.



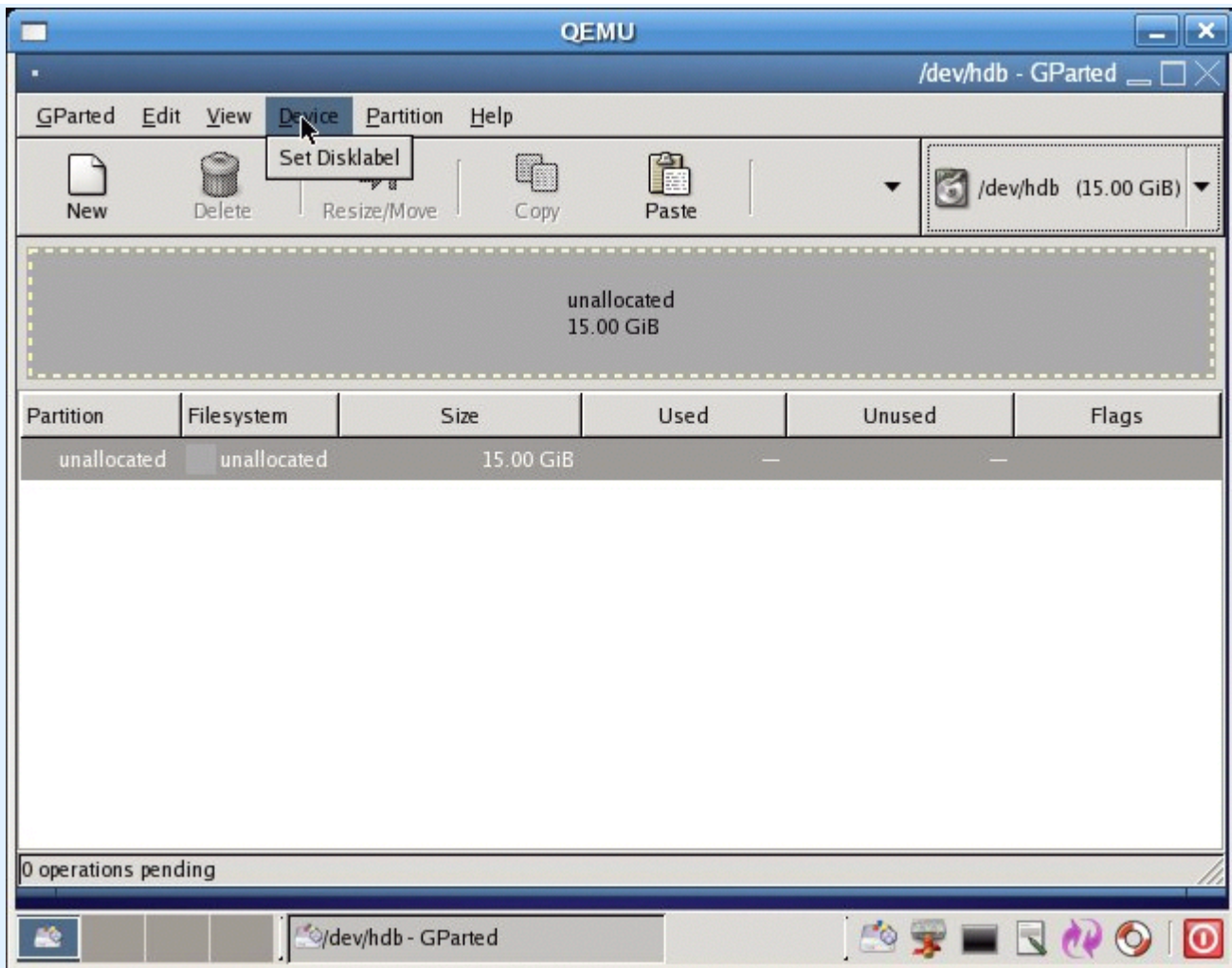
b) Right click on the selected partition to copy to make it active, and click on *copy* in the menu.



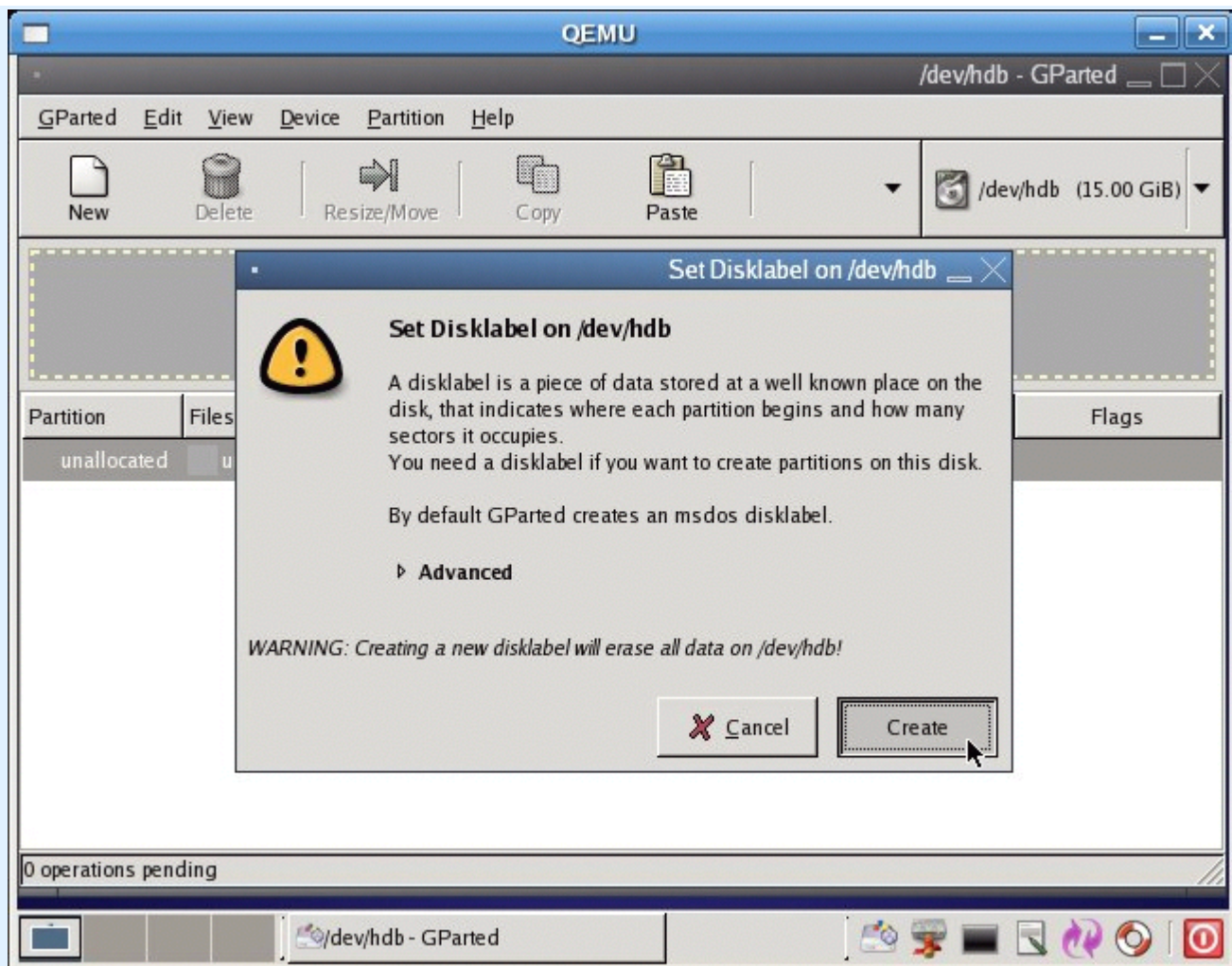
c) Using the drop-down box, choose the second hard drive, where the partition is going to be pasted.



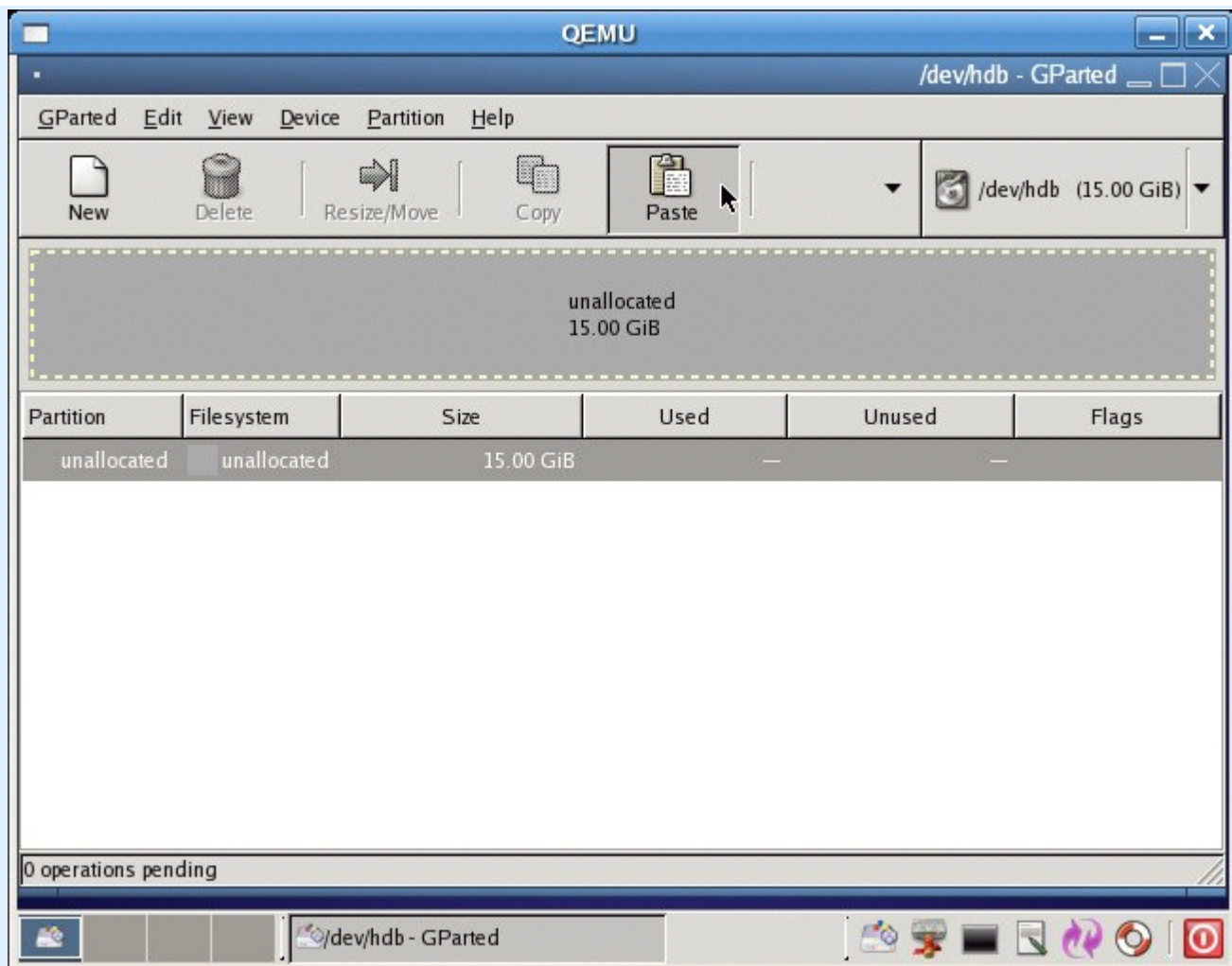
d) If the second drive is new, you will need to *Set Disklabel* to enable the past action. Otherwise you will have a error message. Click in the unallocated space to make it active and then click on *Drive* and *Set disklabel*.



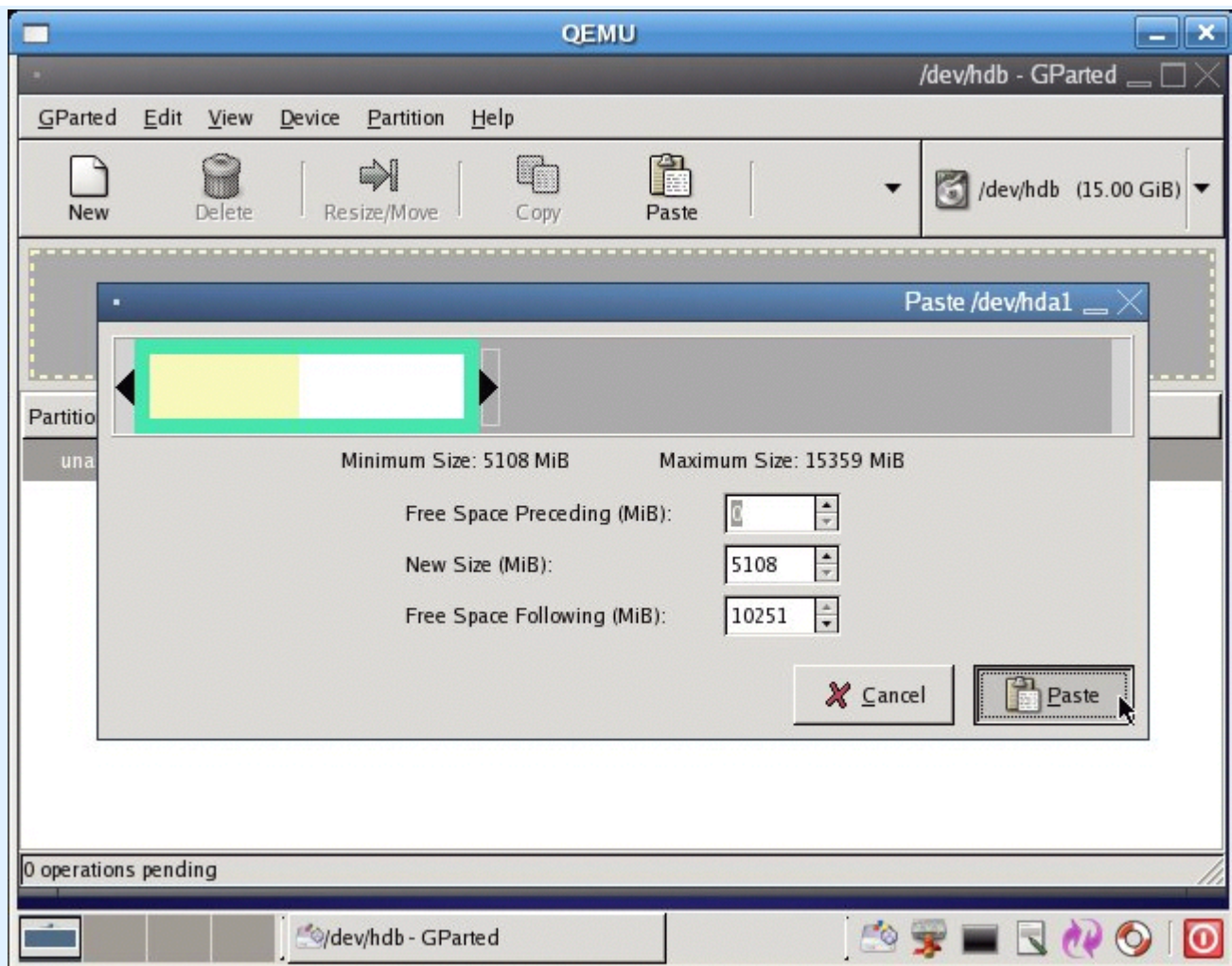
e) AFTER YOU HAVE READ the warning message, and you are sure that the drive is empty, click on **create** !



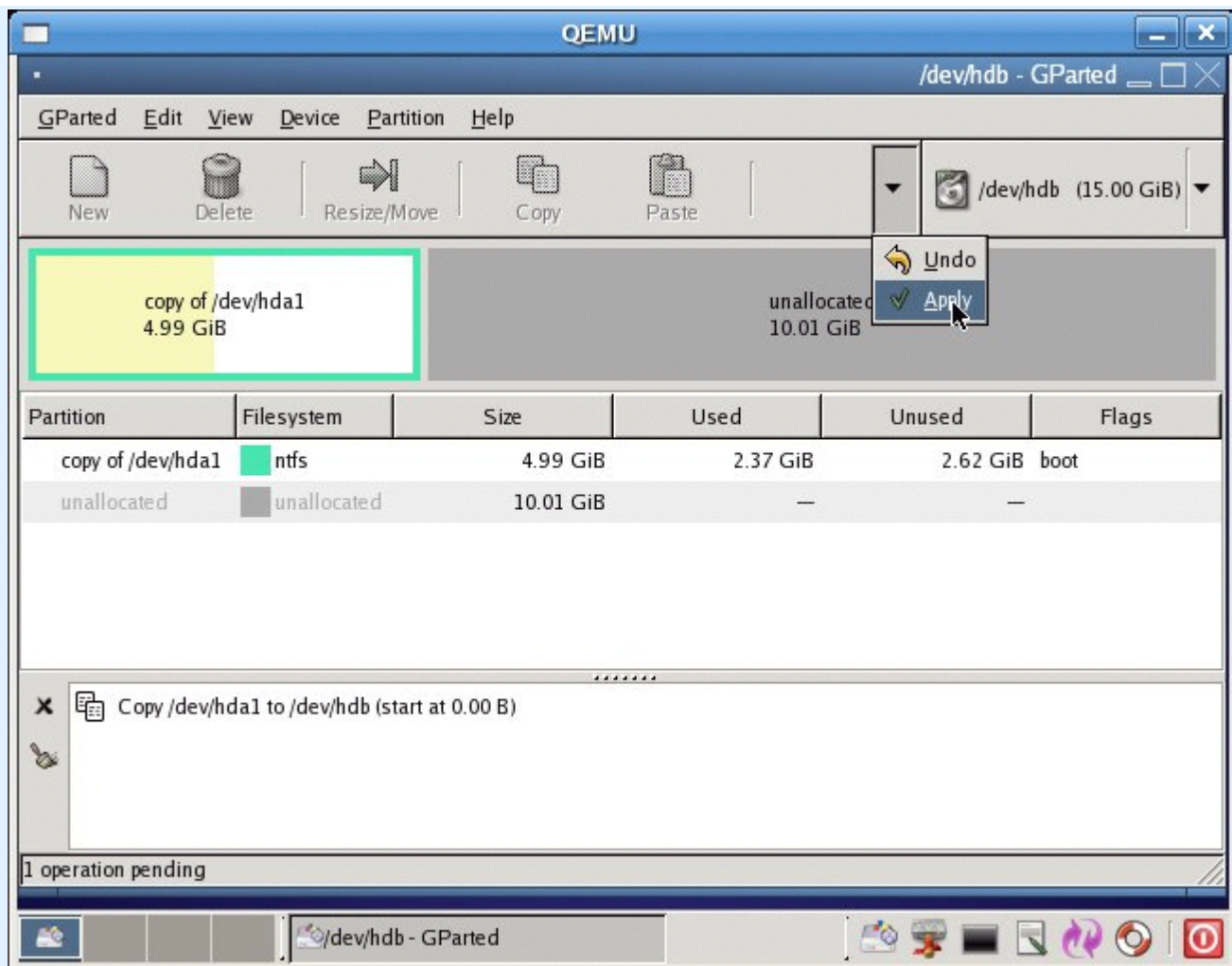
f) Then, active the partition by clicking it and click again, on **Past** in the menu.



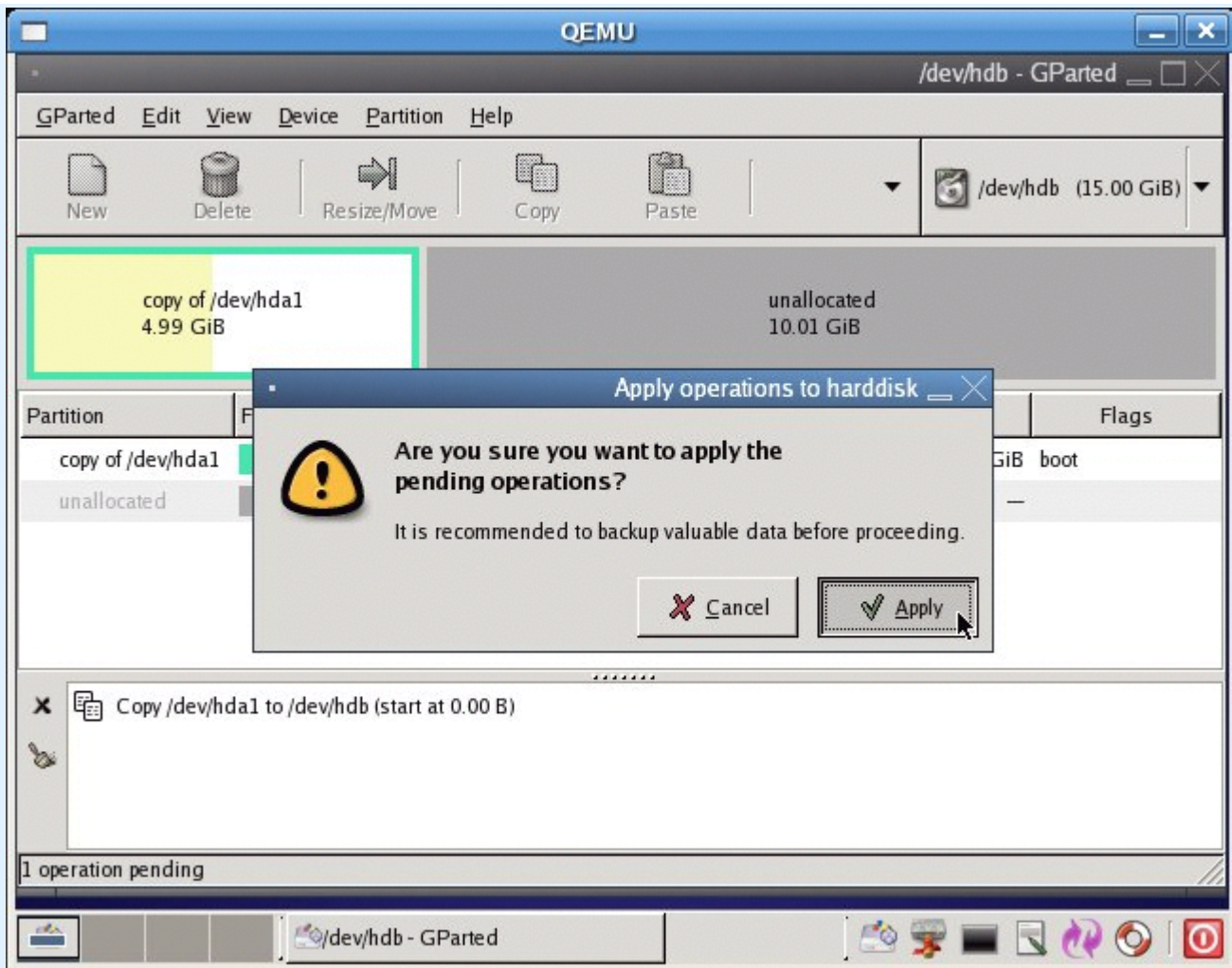
g) In the new window, click *Past* again.



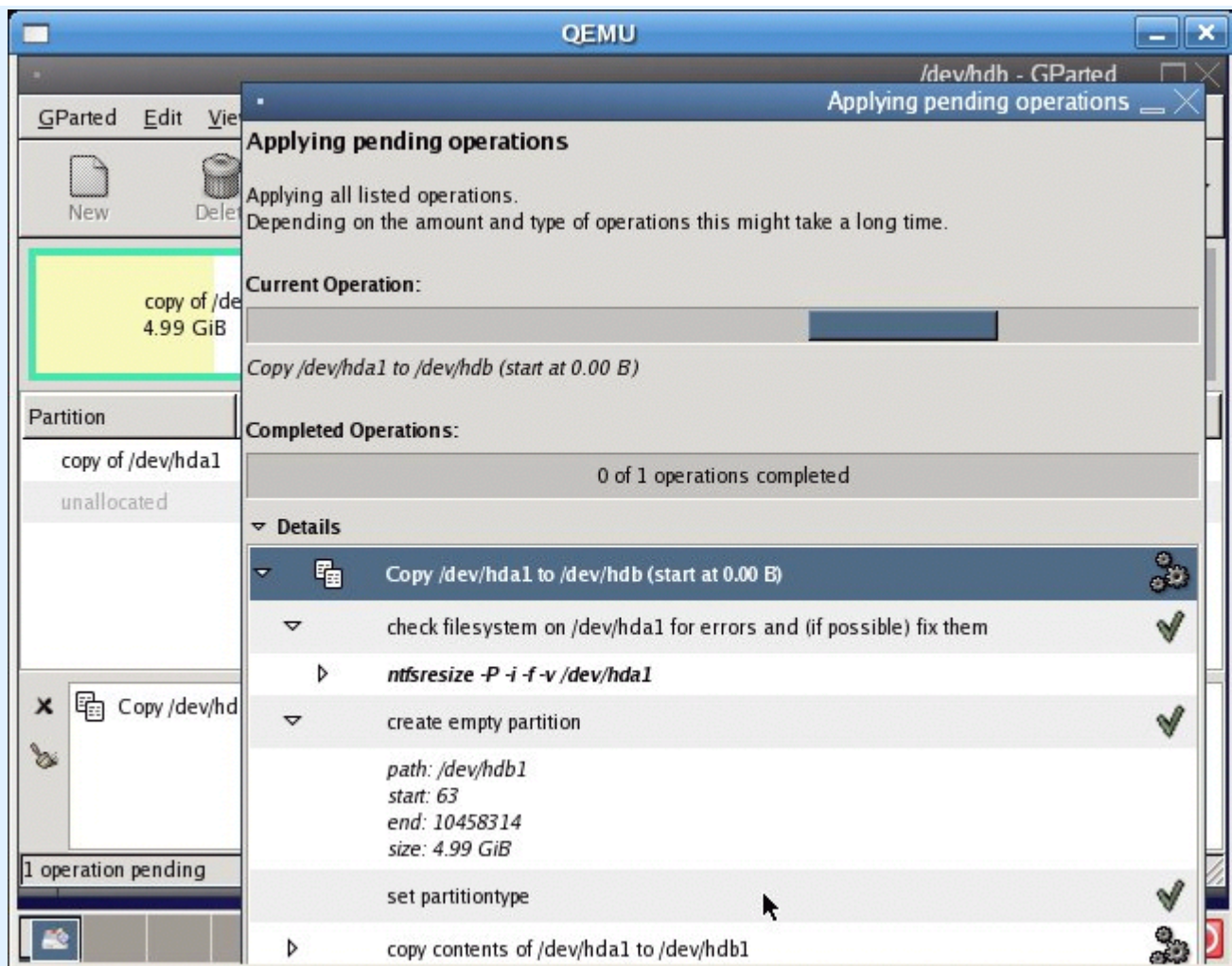
h) And *Apply* changes



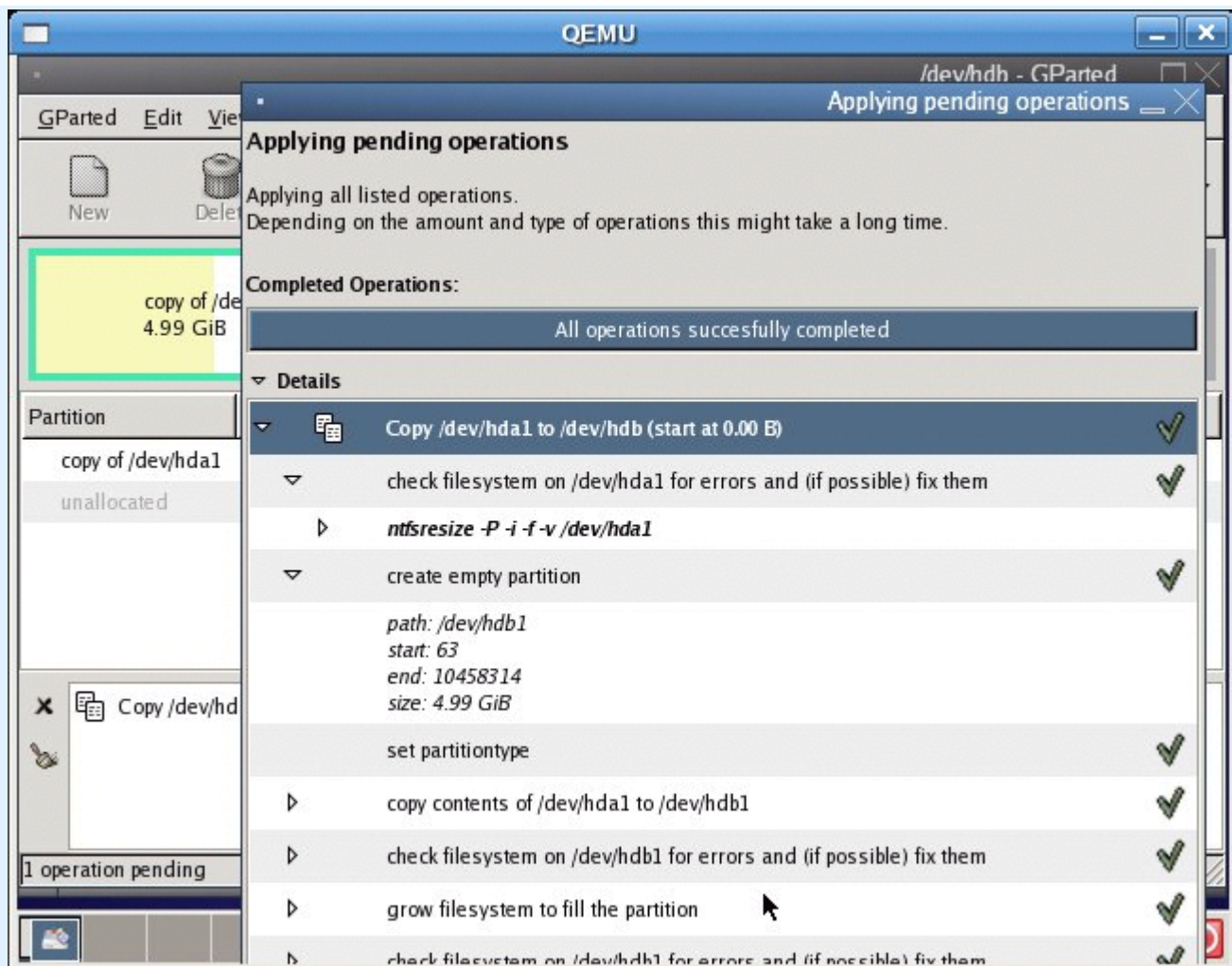
i) And one more time, the last one !



j) It goes on...



k) And suddenly... *all operations are successfully completed !*



ATTENTION PLEASE ! DON'T REBOOT RIGHT NOW !!! If you do this, it will be a big **crash!** Actually you have the same windows XP on both hard drive. From the second hard drive, XP cant boot, because there is no MBR for the moment ! But if you try to reboot, the first hard drive will run XP and seeing the second XP on the second hard drive, it will be a kind of disaster ! Windows cant bear windows ! So, just unplug both hard drive, and plug the new one as master, leaving the other one for the moment. Of course, if you use a bootloader like grub, you can configure it to hide/unhide one of the XP you want to ([Booting Dos-Windows with grub](#))