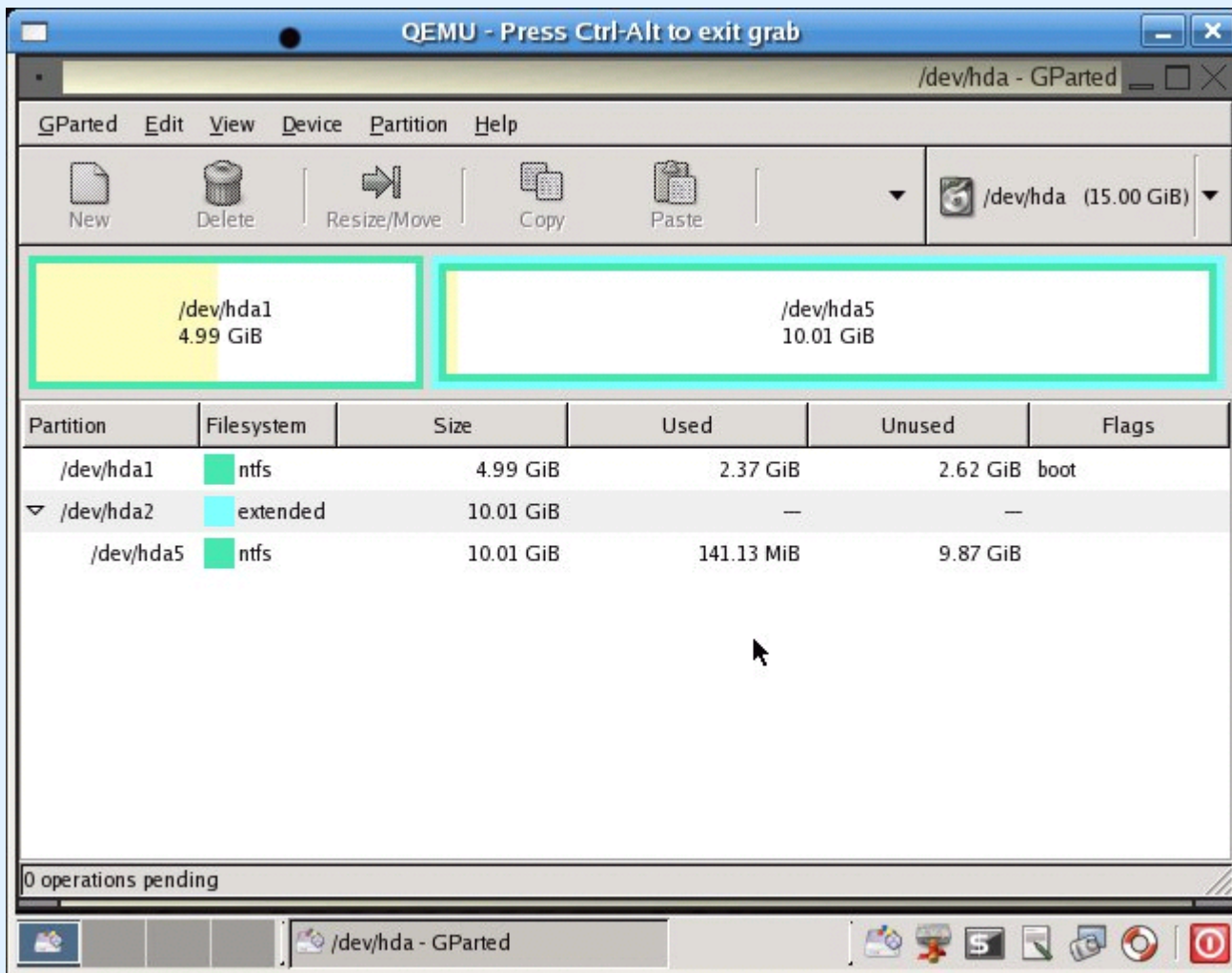
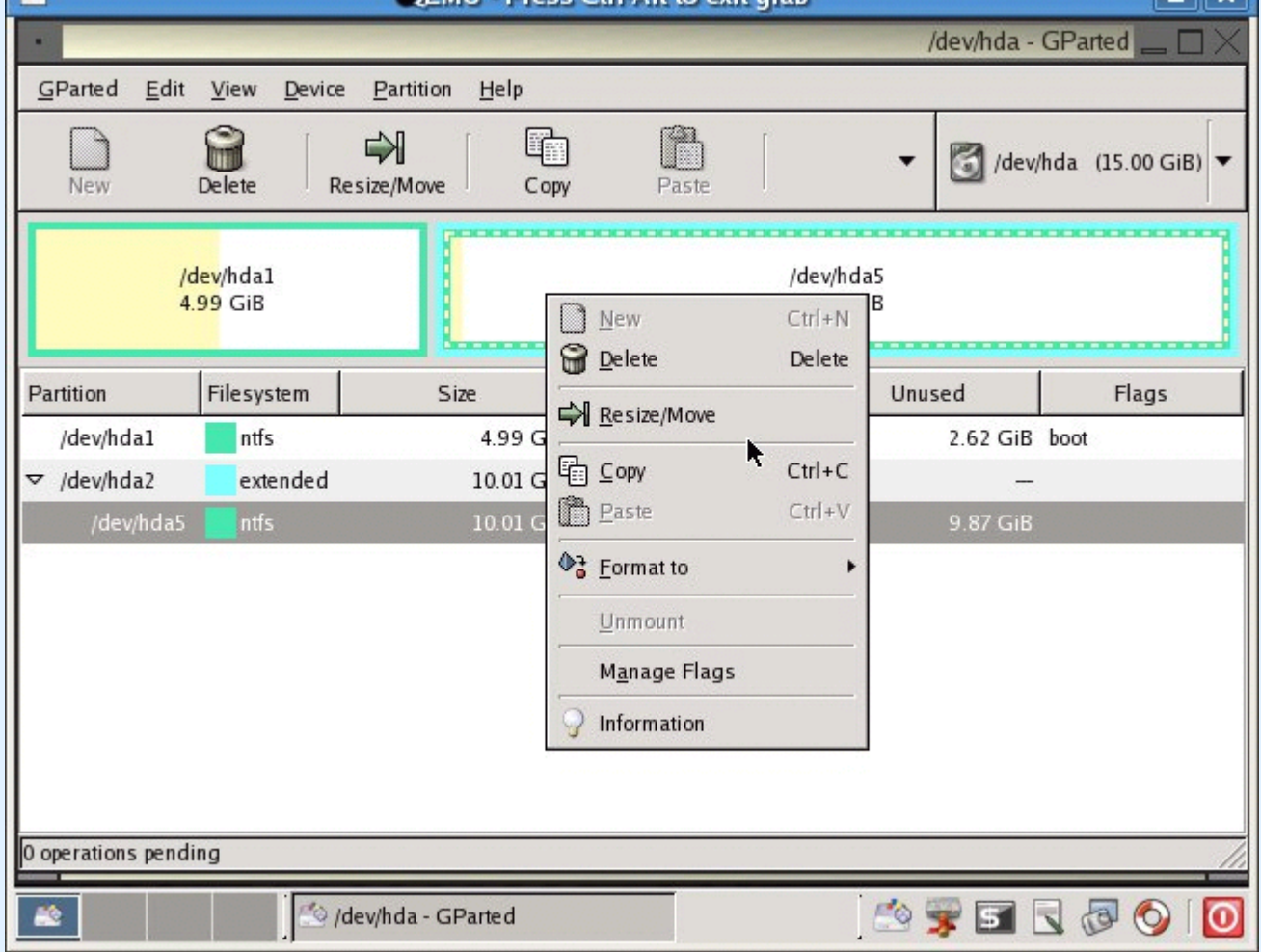


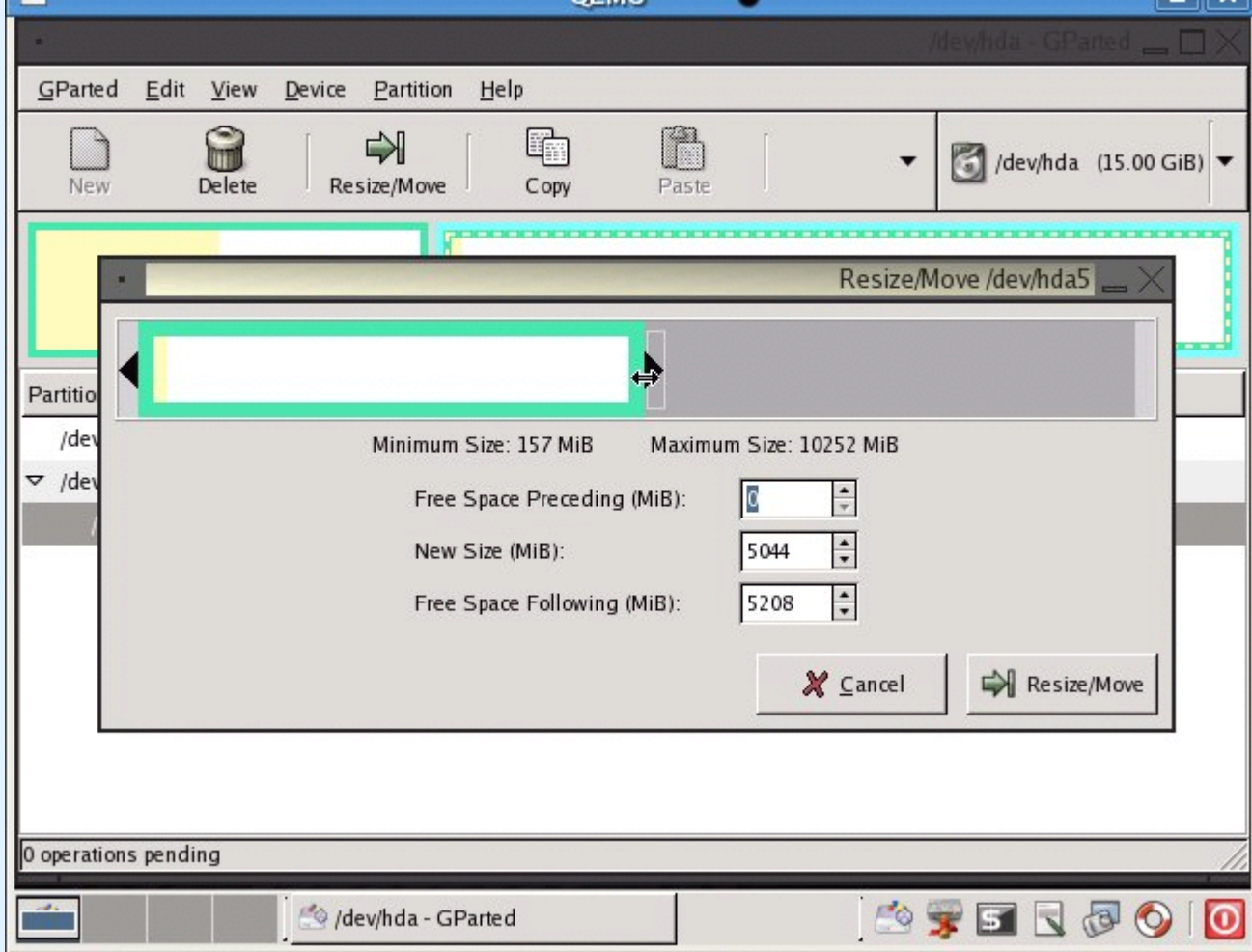
# GETTING FREE SPACE TO GROW-UP A PARTITION

The first thing you need to understand is that you can't use non-contiguous free space !  
Have a look at the following picture :

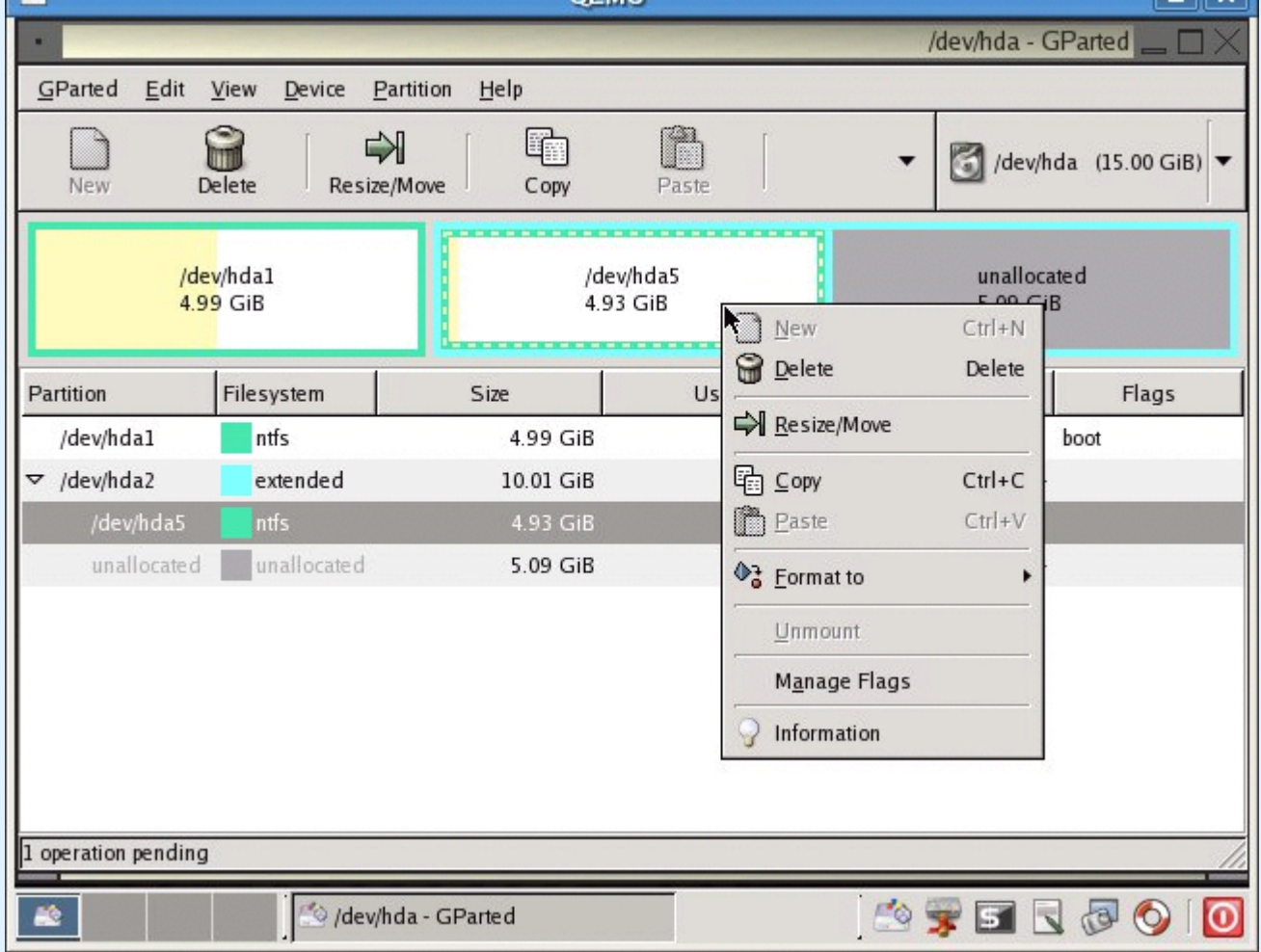


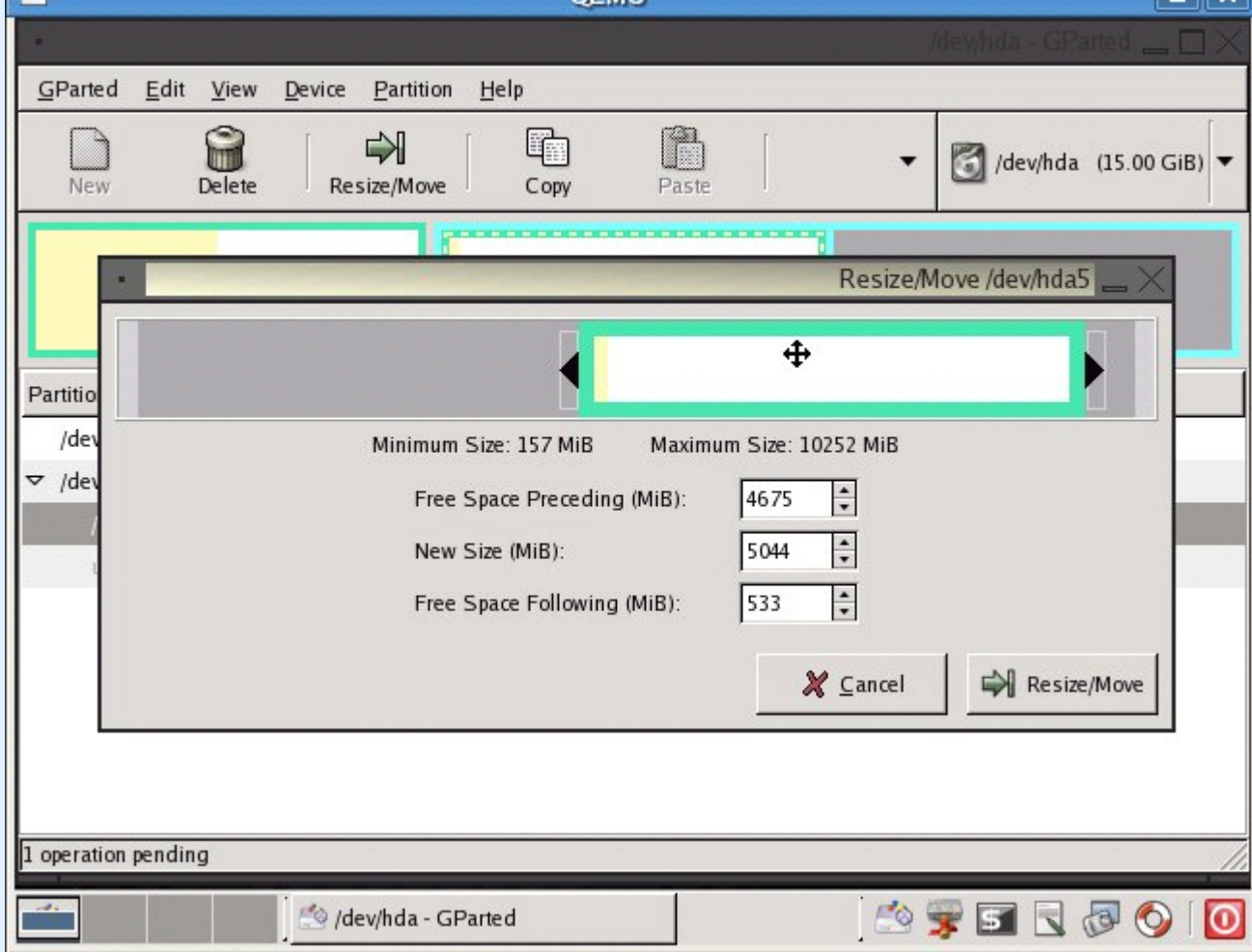
As you can see, we have many unused space in hda5 ! So we are going to shrink hda5 :





We have now free space in the extended partition, hda2 ! So we can move hda5 from the beginning to the end of hda2 :





Now we are able to shrink hda2, and get free space in front of hda2 :

Qemu /dev/hda - GParted

GParted Edit View Device Partition Help

New Delete Resize/Move Copy Paste /dev/hda (15.00 GiB)

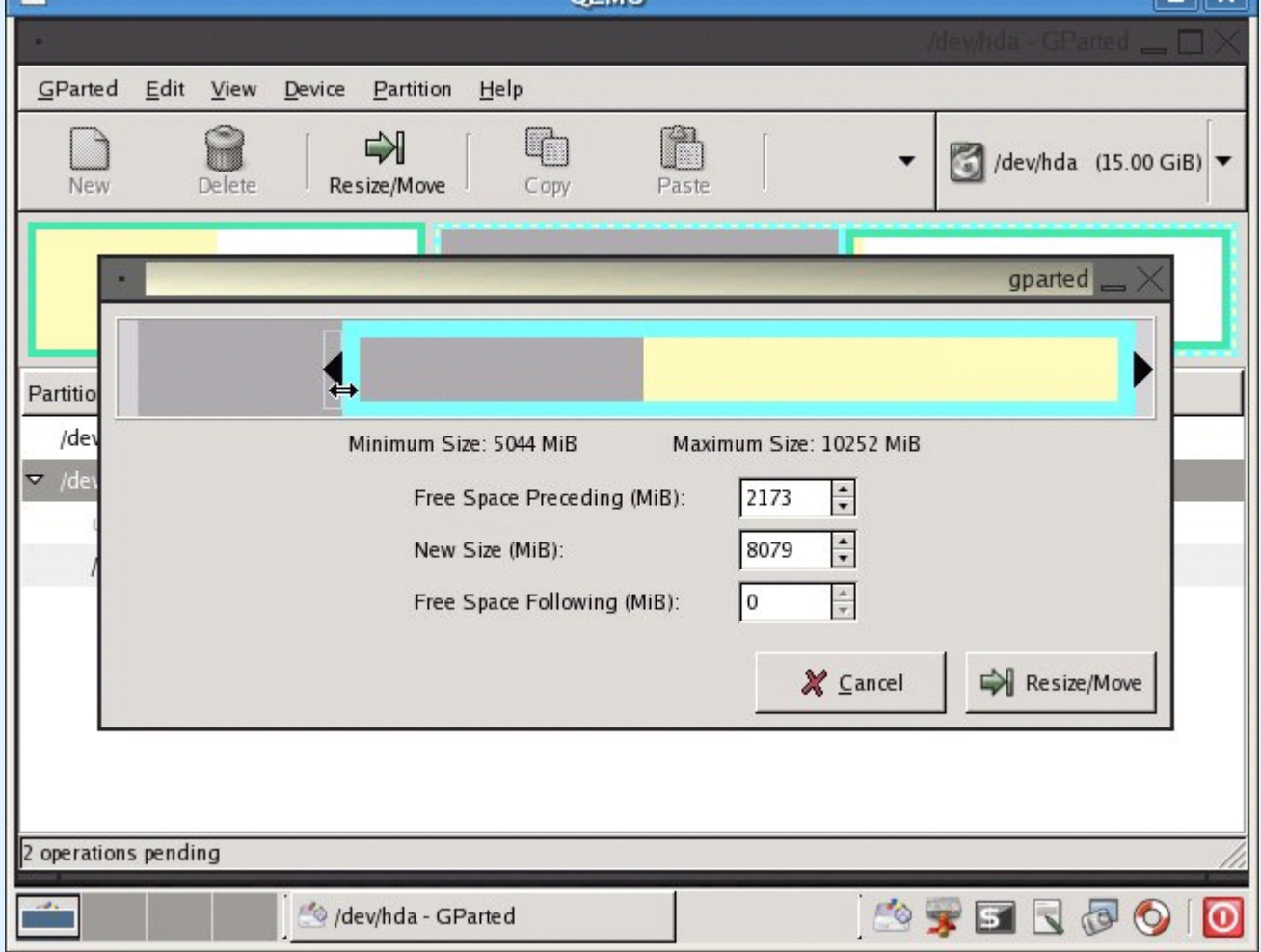
/dev/hda1 4.99 GiB unallocated 5.09 GiB /dev/hda5 4.93 GiB

Partition	Filesystem	Size	Used	Unused	Flags
/dev/hda1	ntfs	4.99 GiB	2.37 GiB	2.62 GiB	boot
▼ /dev/hda2	extended	10.01 GiB	—	—	—
unallocated	unallocated	—	—	—	—
/dev/hda5	ntfs	—	141.13 MiB	4.79 GiB	—

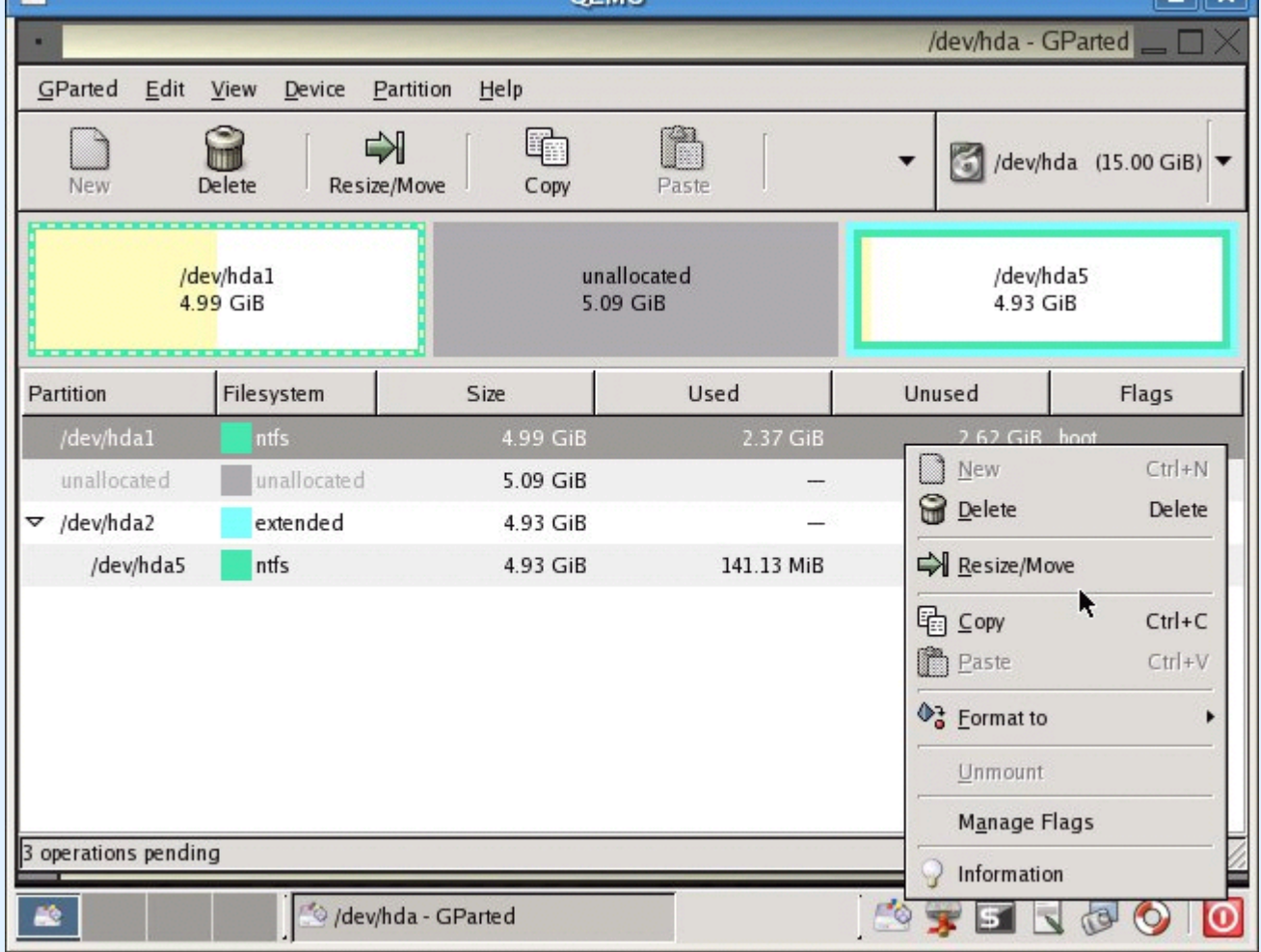
2 operations pending

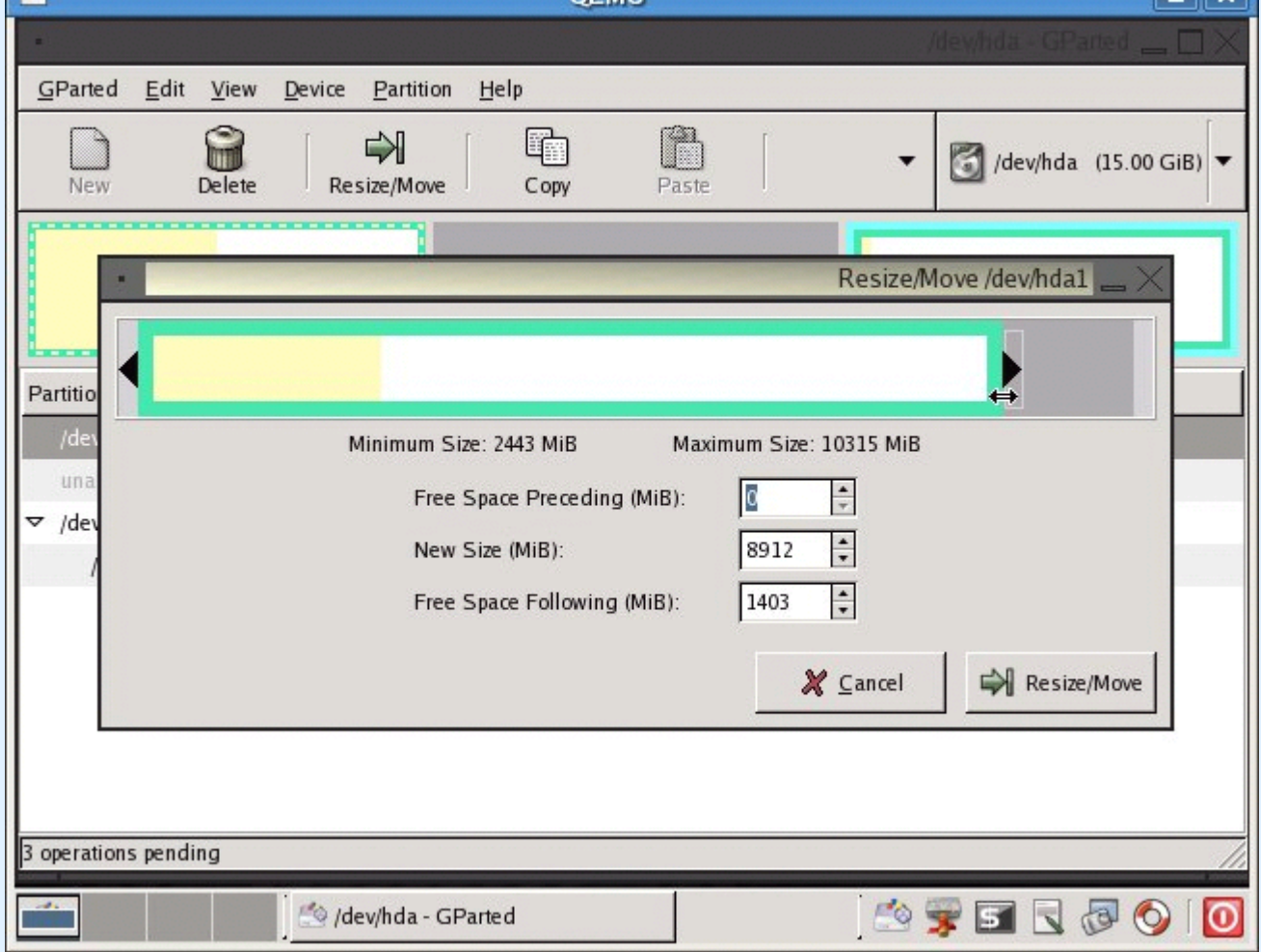
New Ctrl+N  
Delete Delete  
Resize/Move  
Copy Ctrl+C  
Paste Ctrl+V  
Format to  
Unmount  
Manage Flags  
Information

/dev/hda

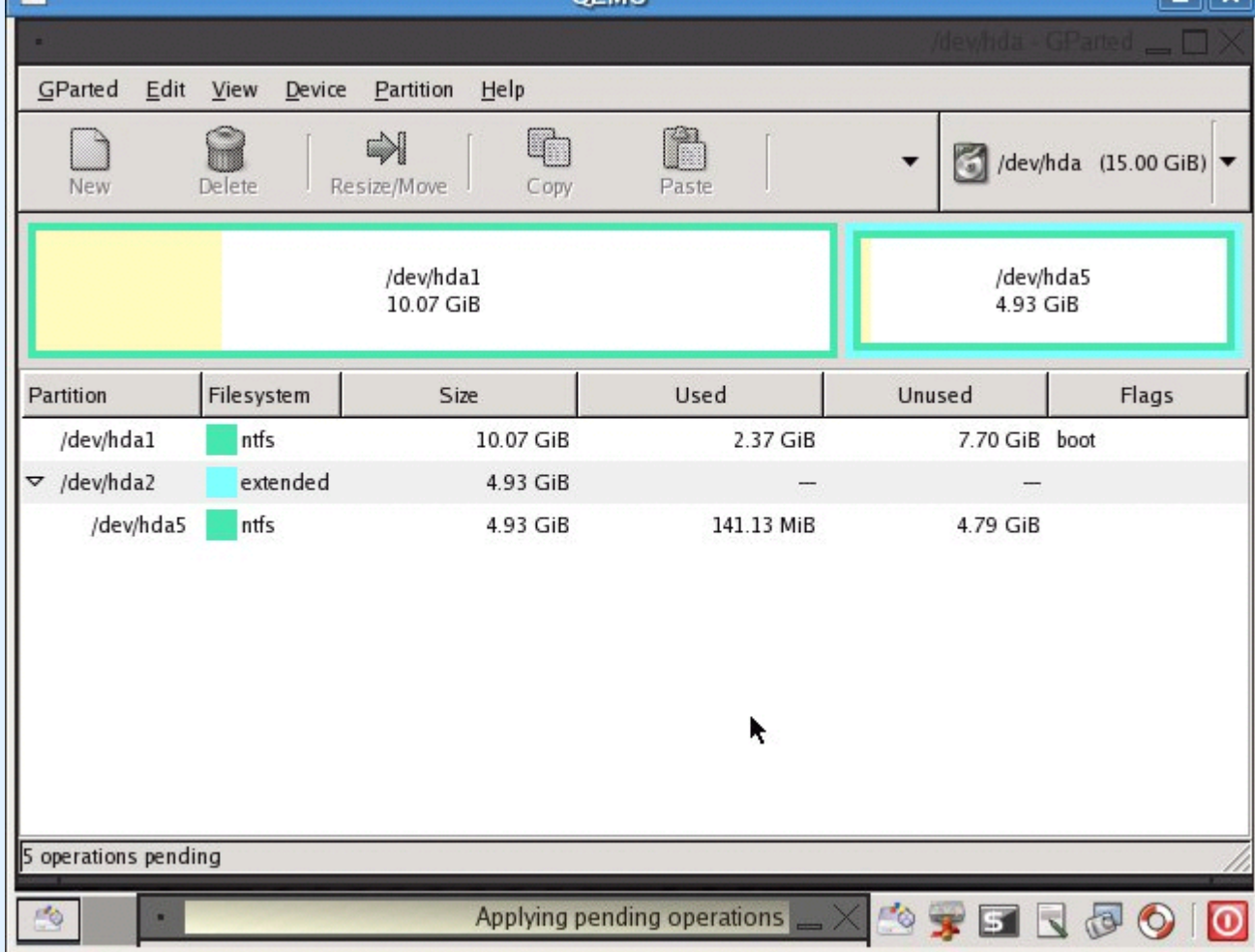


So it is time to grow up hda1 :





At the end, we have grown up hda1 with free space we took from hda5 !



**In this example, we have worked with NTFS ! IF YOU WORK WITH NTFS, YOU NEED TO REBOOT AND LET THE SYTEM CHECK FOR CONSISTENCY, before doing anything else ! It will reboot at least one time !**